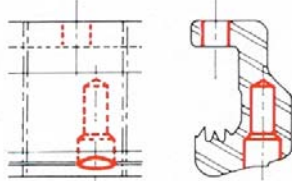


Detailed drawings of this machine can be sold on request

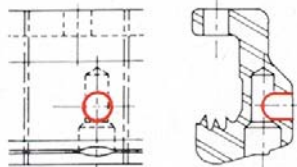
### GAMME D'USINAGE ARBEITSABLAUF TOOLING RANGE

#### POSTE - STATION 1



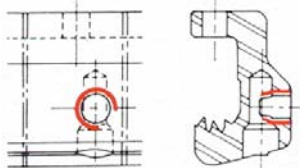
- perçage étagé  
- *Stufenbohrung*  
- step drilling  
Ø 7,5 mm / Ø 12 mm
- perçage  
- *Bohrung*  
- drilling  
Ø 8,8 mm

#### POSTE - STATION 2



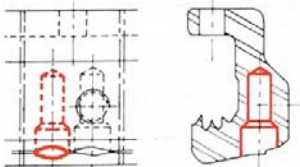
- perçage  
- *Bohrung*  
- drilling  
Ø 8,8 mm

#### POSTE - STATION 3



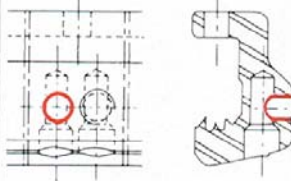
- taraudage  
- *Gewindebohren*  
- tapping  
M 10 x 1

#### POSTE - STATION 4



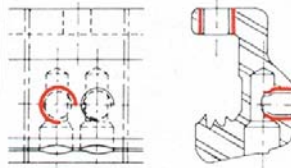
- perçage étagé  
- *Stufenbohrung*  
- step drilling  
Ø 7,5 mm / Ø 12 mm

#### POSTE - STATION 5



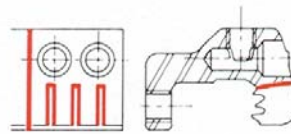
- perçage  
- *Bohrung*  
- drilling  
Ø 8,8 mm

#### POSTE - STATION 6



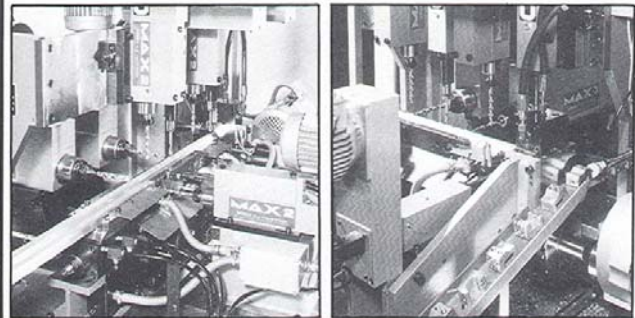
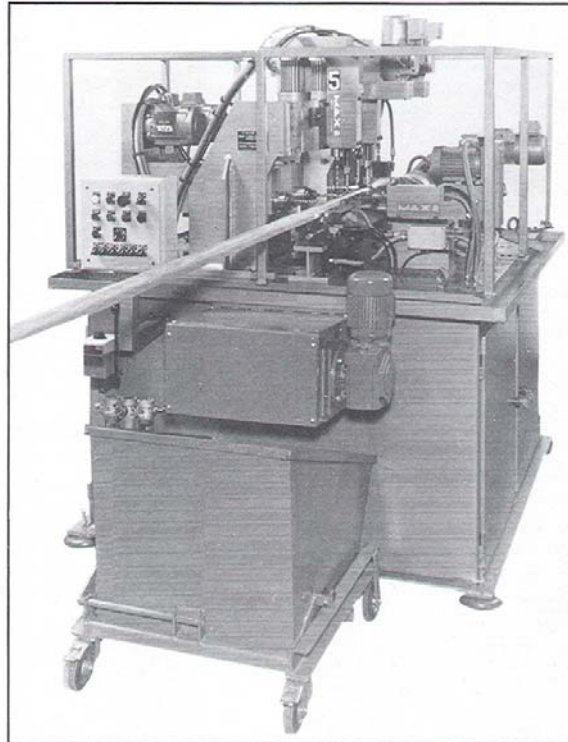
- taraudage  
- *Gewindebohren*  
- tapping  
2 x M 10 x 1

#### POSTE - STATION 7



- rainurages - tronçonnage  
- *Nutenfräsen - Trennen*  
- slitting - sawing
- déchargement automatique  
- *Automatische Abladung*  
- ejection station

### VUE D'ENSEMBLE ET DETAILS MACHINE UEBERBLICK UND EINZELHEITEN DER MASCHINEN OVERLOOK AND MACHINE DETAILS



### CARACTERISTIQUES PRINCIPALES HAUPTSÄCHLICHE DATEN MAIN FEATURES

- production horaire : 250 pièces
- nombre d'unités : 6 MAX 2 - 2 MAX 3 - 1 MAX 4/UA 4
- la pièce est entièrement usinée sur la machine, à partir d'un profilé

- *Stundenleistung : 250 Stücke*
- *Zahl an Einheiten : 6 MAX 2 - 2 MAX 3 - 1 MAX 4/UA 4*
- *Das Stück aus dem Profil, ist am Ende der Taktanlage ganz verarbeitet*

- hourly output : 250 pieces
- number of units : 6 MAX 2 - 2 MAX 3 - 1 MAX 4/UA 4
- the piece, from profiled rods tooled, is achieved at the end of the transfer

