

Centralized lubrication for UA 2, 3, 4, 5, 6, and MAX 20 CN, **GRC**

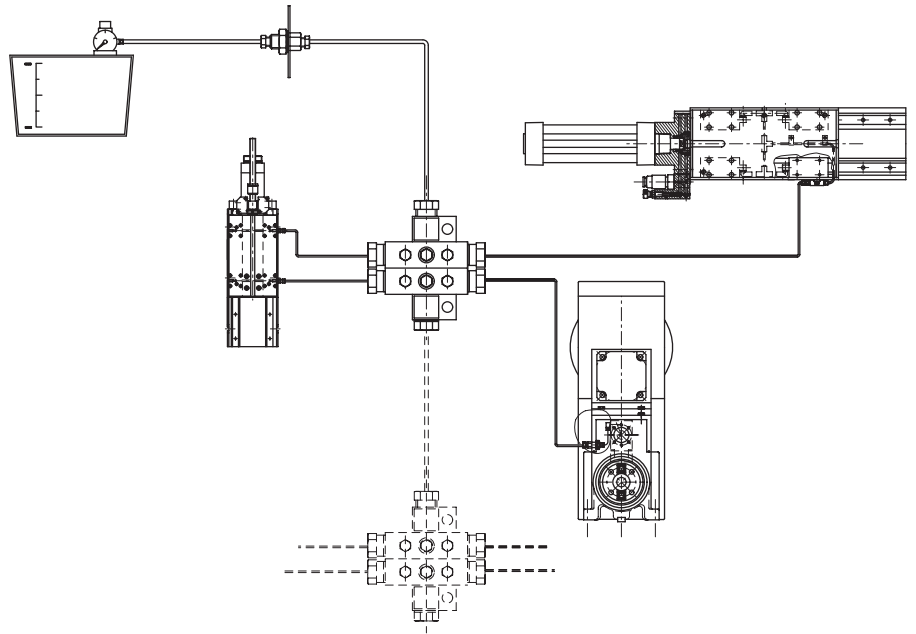
According to your technical needs, SOMEX offers various solutions:

- Up to 4 lubrication outputs.
- Two types of fluid pumps:
 - Automatic pneumatic piston pump
 - Gear driven electrical pump with 2.7 l or 6 l tanks

Order reference	
GRCUE-00100	Electrical pump 2,7 l
GRCUE-00101	Electrical pump 6 l

Order reference	
GRCUP-00100	Pneumatic pump 2,7 l
GRCADD-00100	Extra unit connector set

Units	Outputs
MAX 20 CN	1
UA 2 CN	3
UA 2 P / OP	2
UA 3 P / OPS / OPD / H	2
UA 3 CN	3
UA 4	2
UA 5 DNL / DNR	3
UA 5 DH	2
UA 6 DN / GN	4
UA 6 DH / GH	2



Centralized lubrication for TRIAX **GRC**

- Intermittent gear driven electrical pump with 2.7 l or 6 l tanks.

Order reference	
GRCTRI-00100	Electrical pump 2,7 l
GRCTRI-00101	Electrical pump 6 l
GRCADD-00101	Supplied connections for TRIAX

